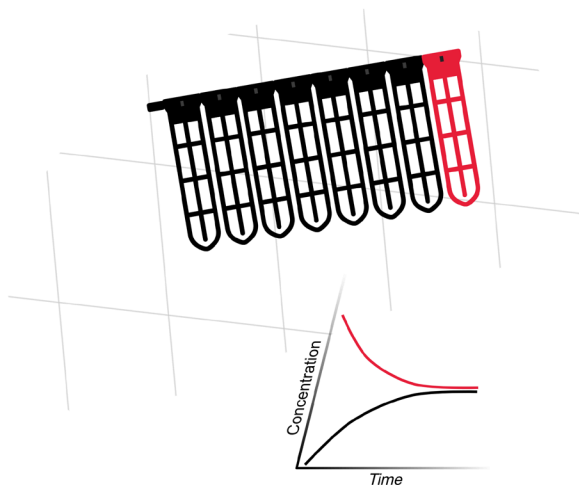


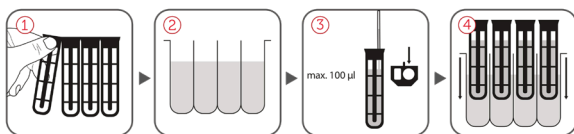
# Xpress Micro Dialyzer

## MD100

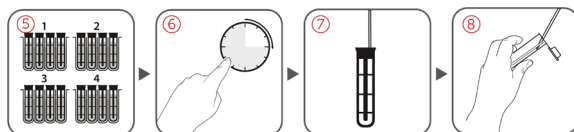
### Quick Guide



## Quick Guide



- 1. Preparation.** If only one segment is used, separate it carefully from 8-segmented MD. Please, don't touch the membrane!
- 2. Buffer Preparation.** Pipette dialysis buffer either in a.) a deep-well plate  $V \leq 2,000 \mu\text{l}$ , or in b.) a microcentrifuge tube  $V \leq 1400 \mu\text{l}$ .
- 3. Loading the sample.** Bring the pipette with sample volume firmly into the round opening. Sample volume should be between 10-100  $\mu\text{l}$ .
- 4. Introduction.** Put the MD or the single segment into a.) a deepwell plate or b.) in a microcentrifuge tube as prepared in step 2.



- 5. Dialysis.** One step dialysis can be done in the same microcentrifuge tube or Deep-Well plate. If more than one dialysis step is required, then change the position of MD into the Deep-Well plate channels or use a new microcentrifuge tube.
- 6. Dialysis time.** The dialysis time depends on the compound and the cut-off of the semipermeable membrane.
- 7. Sample retrieval.** Set the pipette volume to 130  $\mu\text{l}$ , for a sample of 100  $\mu\text{l}$ . Press the pipette button to first stop, hold it, and bring pipette with pipette tip firmly into round opening. Aspirate the sample.
- 8. Further analysis.** Finally, pipette out the sample into a microcentrifuge tube or a micro plate.



scienova GmbH  
Spitzweidenweg 30  
07743 Jena  
Germany

p: +49 (0) 3641 504 586  
f: +49 (0) 3641 504 587  
e: [info@scienova.com](mailto:info@scienova.com)  
w: [www.scienova.com](http://www.scienova.com)

© 2018 scienova GmbH | All rights reserved, including pictures and graphics. This print product is protected by copyright. No part of this print product may be reproduced in any form, including pictures and graphics, or utilized by any information storage and retrieval system without written permission from the copyright owner, except for brief quotations embodied in critical articles and reviews.

I 201806