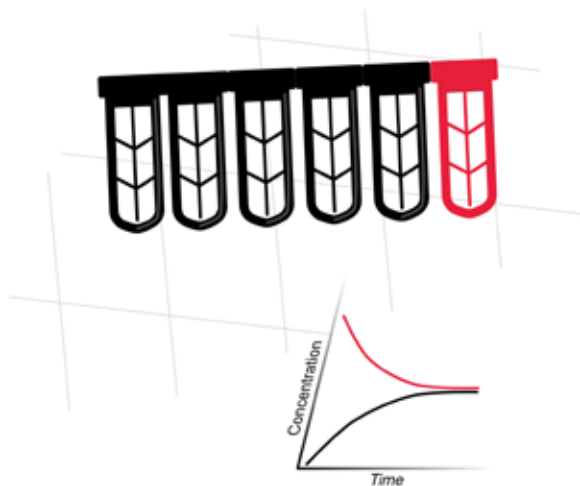


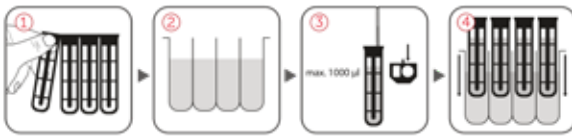
Xpress Mini Dialyzer

MD1000

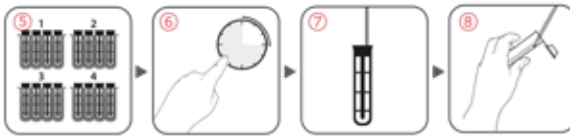
Quick Guide



Quick Guide



1. Preparation. If only one segment is used use, separate it carefully from 6-segmented MD. Don't touch the membrane, please!
2. Buffer Preparation. Pipette dialysis buffer either in a.) a deep well plate $V \leq 2,950 \mu\text{l}$, or b.) in a 25 ml-microcentrifuge tube $V \leq 10.0 \text{ ml}$.
3. Loading the sample. Bring the pipette with sample volume firmly into the round opening (with blue line). Sample volume should be between 150 and 1,000 μl .
4. Introduction. Put the MD or the single segment into a) a deep well plate or b) in a sample tube as prepared in step 2.



5. Dialysis. One step dialysis can be done in the same sample tube or deep well plate. If more than one dialysis step is required, change the position of MD in the deep well plate channels or use a new sample tube.
6. Dialysis time. The dialysis time depends on the compound and the cut-off of the semipermeable membrane.
7. Sample retrieval. Set the pipette volume to 1,030 μl for a sample of 1,000 μl . Press the pipette button to first stop, hold it, and bring pipette with pipette tip firmly into round opening (with blue line). Aspirate the sample.
8. Further analysis. Finally, pipette the sample into a sample tube or a micro plate.

Manufactured by:


scienovaTM
 innovating for better science

scienova GmbH
 Spitzweidenweg 30
 07743 Jena
 Germany

p: +49 (0) 3641 504 586
 f: +49 (0) 3641 504 587
 e: info@scienova.com
 w: www.scienova.com

© 2019 scienova GmbH | All rights reserved, including pictures and graphics. This print product is protected by copyright. No part of this print product may be reproduced in any form, including pictures and graphics, or utilized by any information storage and retrieval system without written permission from the copyright owner, except for brief quotations embodied in critical articles and reviews.

I 201810